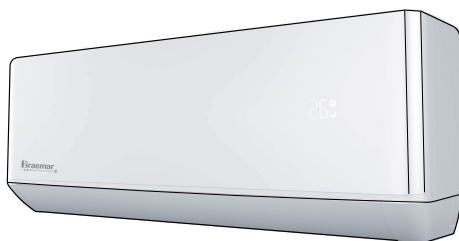
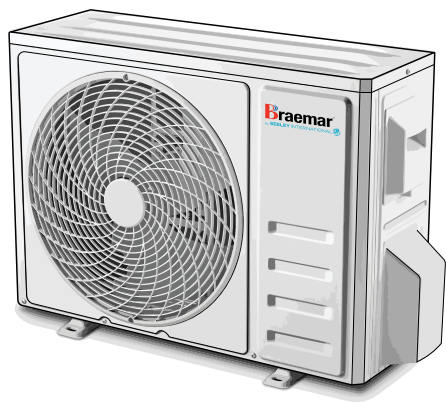


WIFI MANUAL

TSHV/TCHV R32 HIGH WALL SPLIT SYSTEM



IMPORTANT

As with any product that has moving parts or is subject to wear and tear, it is **VERY IMPORTANT** that you maintain your air conditioner and have it regularly serviced. Accordingly, it is a condition of warranty cover for your air conditioner that you comply with all of the maintenance and service requirements set out in this manual. Compliance with these requirements will prolong the life of your air conditioner. Furthermore, it is also a condition of warranty cover that the Maintenance Schedule in the manual is filled out (by signing and dating it in the places indicated) when the item is completed.

ANY FAILURE TO CARRY OUT THE REQUIRED MAINTENANCE AND SERVICING, AND ANY FAILURE TO FILL OUT THE MAINTENANCE SCHEDULE, WILL VERY LIKELY VOID YOUR WARRANTY.

(For complete warranty terms, refer to the separate Warranty Booklet sold with the product. Alternatively, visit <https://www.seeleyinternational.com/warranty/> to download the terms. Warranty terms are subject to property access and industry safety standards.)

Outdoor Unit	Indoor Unit	Capacity Cool/Heat
TCHV25T1S	TSHV25T1S	2.80kW / 2.65kW
TCHV35T1S	TSHV35T1S	3.50kW / 4.50kW
TCHV50T1S	TSHV50T1S	5.20kW / 5.20kW
TCHV70T1S	TSHV70T1S	7.20kW / 7.20kW
TCHV80T1S	TSHV80T1S	8.20kW / 8.50kW

TABLE OF CONTENTS

WI-FI MODULE SPECIFICATION AND OPERATION GUIDELINE	2
DOWNLOAD AND INSTALL THE APP	3
ACTIVATE APP	4
REGISTRATION	5
LOGIN	6
CREATING A FAMILY	7
FORGOT THE PASSWORD	8
ADD DEVICE	9
1.CF MODE	9
2.AP MODE	10
3.BLUETOOTH MODE	11
AIR CONDITIONER CONTROL	12
CONTROL FORM 1	13
<i>MODE SETTING</i>	14
<i>FUNCTION SETTING</i>	14
<i>FAN SPEED SETTING</i>	14
<i>TIMER SETTING</i>	14
<i>TIMER MANAGEMENT</i>	15
CONTROL FORM 2	16
<i>MODE SETTING</i>	17
<i>FAN SPEED SETTING</i>	17
<i>AIR FLOW CONTROL</i>	18
<i>ECO FUNCTION</i>	19
<i>SLEEP FUNCTION</i>	20
<i>TIMER ON SETTING</i>	21
<i>TIMER OFF SETTING</i>	22
<i>TIMER MANAGEMENT</i>	23
<i>MORE FUNCTIONS</i>	24
<i>DEVICE DETAILS AND MANAGEMENT</i>	27
ACCOUNT MANAGEMENT	29
ACCOUNT PROFILE SETTING	29
HOME(FAMILY) MANAGEMENT	30
TROUBLESHOOTING	31
NOTES	32

WI-FI MODULE SPECIFICATION AND OPERATION GUIDELINE

1. Minimum specifications on a Smart phone:
Android 5.0 version or higher
iOS 9.0 version or higher
2. Basic parameters for Wi-Fi module:

Parameters	Details
Network frequency	2.400 - 2.4835GHz
Standards of WLAN	IEEE 802.11 b/g/n (channels 1-13 for EU/AU)
Protocol stack support	IPv4/TCP/UDP/HTTPS/TLS/DNS
Security support	WEP/WPA/WPA2/AES128
Network type support	STA/AP/STA+AP
Max. RF Power	18.5 dbm
Bluetooth frequency	2.402 - 2.480GHz
Bluetooth RF Power	9 dbm

3. Operation guideline.
Please take below simple guideline instructions as reference.

Operation Steps	Operation Items	New Account	Re-install APP (Registered before)
Step 1	Download and Install App	YES	YES
Step 2	Activate App	YES	YES
Step 3	Register Account	YES	NO
Step 4	Login	YES	YES
Step 5	Add Device to control	YES	Registered Device will remain

Note:

If you have registered the account and added device previously, when you re-install the APP and login, the added device will remain.

DOWNLOAD AND INSTALL THE APP



SmartLife-SmartHome

For Android smart phone:

Method 1: Please scan the QR code, download and install the APP.

Method 2: Open the Google “Play Store” on your smart phone and search for “SmartLife-SmartHome”, download and install the APP.

For iOS smart phone:

Method 1: Please scan the QR code and follow the tips to get into “AppStore”, download and install the APP.

Method 2: Open the Apple “AppStore” on your smart phone and search “SmartLife-SmartHome”, download and install the APP.

Note:

Please enable the permissions of Storage/Location/Camera for this APP when installing. Failure to do so may cause some problems during operation.

ACTIVATE APP

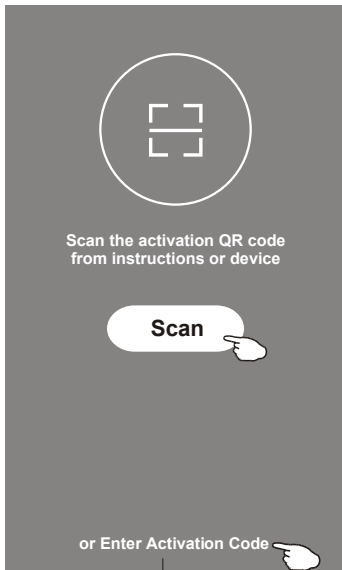
The first time the app is used, it will need activating.

1. Launch the APP “Smart Life” on your smart phone.



SmartLife-SmarHome

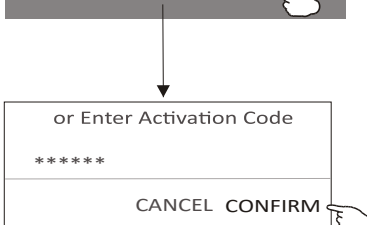
2. Method 1: Tap button “Scan” and scan the right Activate QR code
Method 2: Tap “or Enter Activation Code” in bottom of the screen, then enter the activate code and tap “CONFIRM”.



Activate QR code and activation code

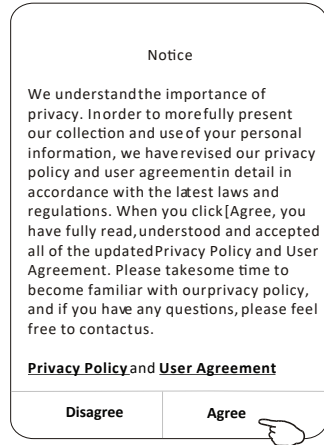
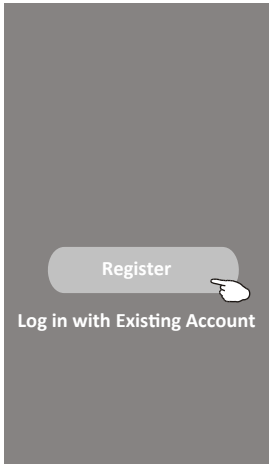


Note: Without the QR code or activation code, you cannot activate the APP and use it.

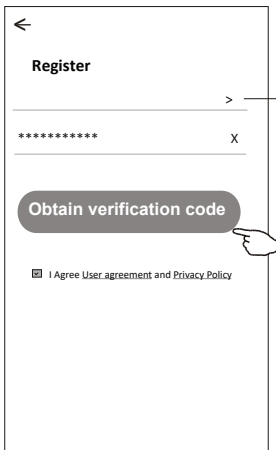


REGISTRATION

1. If you don't have any account please tap "Register" button.
2. Read the Privacy Policy and tap "Agree".



3. Tap ">" and choose the country.
4. Enter your e-mail address.
5. Tap the button "Obtain verification code".



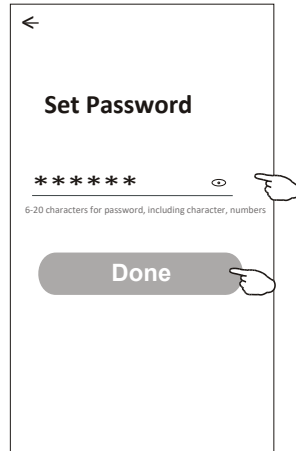
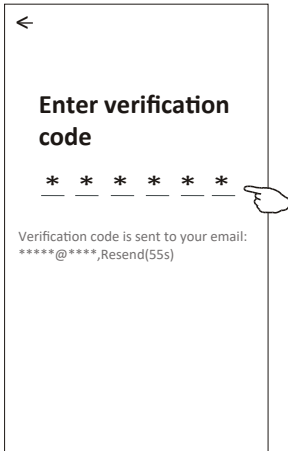
enter your e-mail address here



Search the country or slide the screen up/down to find and choose the Country.

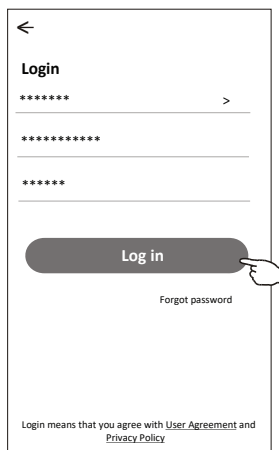
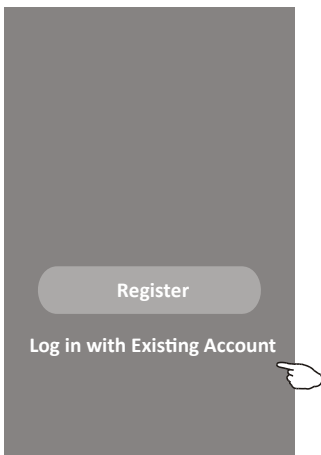
REGISTRATION CONT.

6. Enter the verification code you received on your e-mail.
7. Set the Password with 6-20 characters including characters and numbers.
8. Tap “Done”.



LOGIN

1. Tap “Log in with existing account”.
2. Enter your registered account and password.
3. Tap “Log in” button.



enter your account here

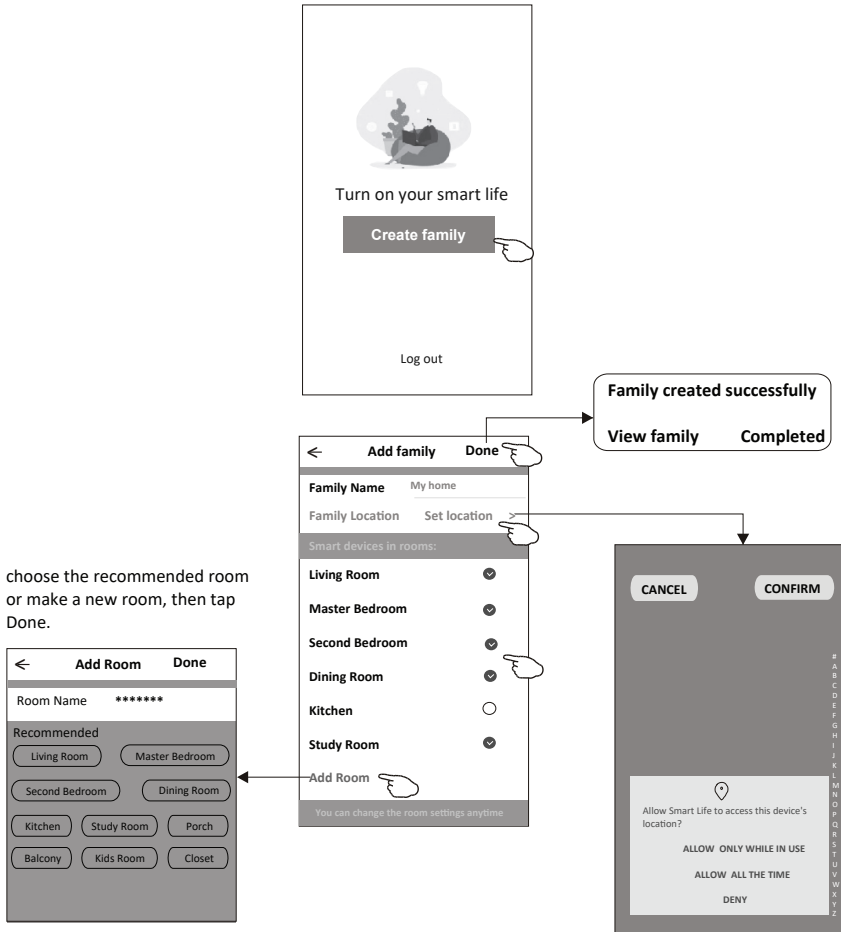
enter the password

LOGIN CONT.

CREATING A FAMILY

The first time the APP is used, family will need to be created.

1. Tap “Create family”.
2. Assign a name for the family.
3. Set the location.
4. Choose default rooms or add new rooms.



choose the recommended room or make a new room, then tap Done.

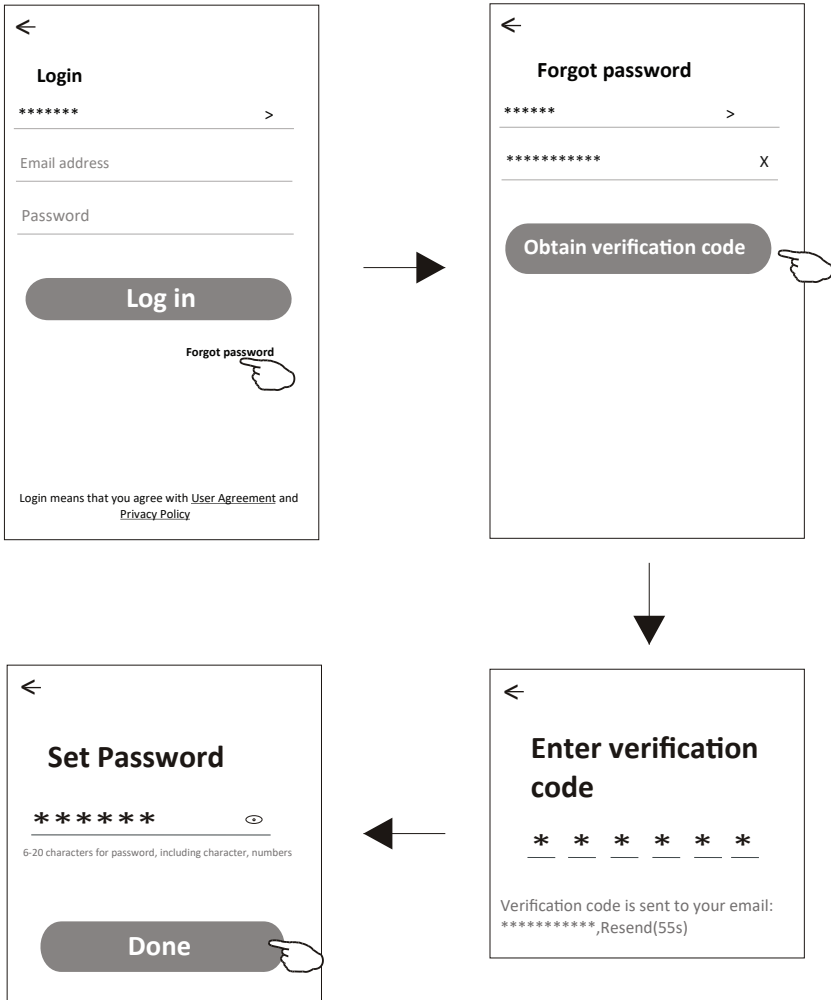
Note:
The app can open the map on your phone and you can set the location where you are.

LOGIN CONT.

FORGOT THE PASSWORD

To reset your password, please follow the steps below.

1. Tap “Forgot password”.
2. Enter your account(e-mail address) and tap button “Obtain verification code”.
3. Enter the verification code received by your e-mail.
4. Set the new password and tap button “Done”.



ADD DEVICE

There are 3 methods to add the device.

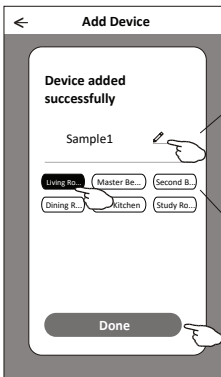
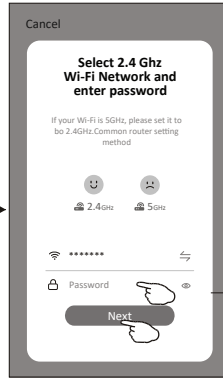
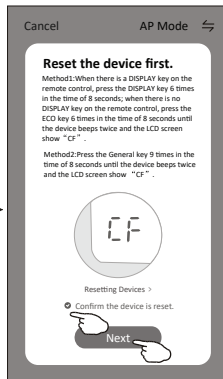
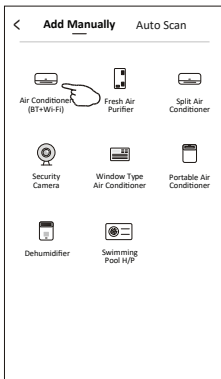
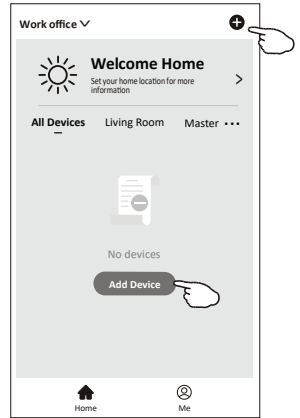
1. CF MODE

- i. Power on the indoor unit, no need to launch the air conditioner
- ii. Click “+” in the upper right corner of the “Home” screen or tap “Add device” on the room which has no device.
- iii. Tap the “Air conditioner (BT+Wi-Fi)” logo.
- iv. Follow the comments on the next screen to reset the Wi-Fi module then check “Confirm the device is reset” and tap “Next”.
- v. Input the password of the Wi-Fi which the same as your smart phone connected, then tap “Next”.
- vi. You can see the percent rate of connecting process, at the same time “PP”, “SA”, “AP” shining in turn on the indoor display.

“PP” means “Searching the router”

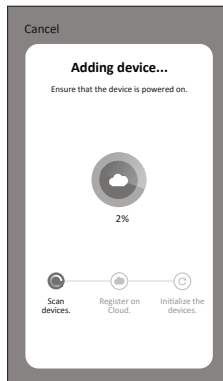
“SA” means “connected to the router”

“AP” means “connected to the server”



Rename the device

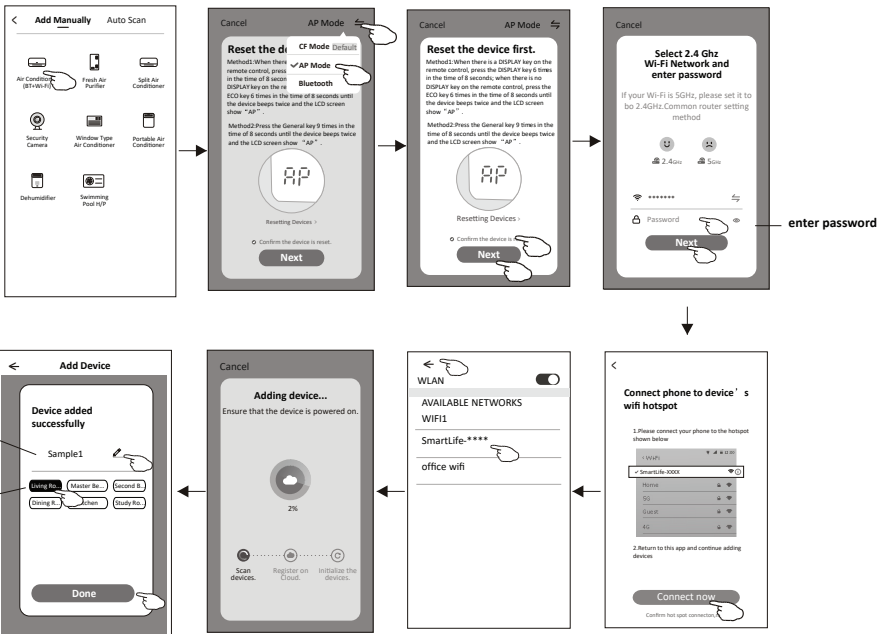
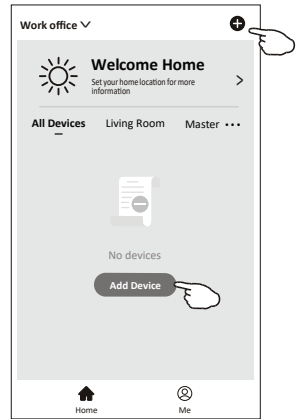
Select the location room



ADD DEVICE CONT.

2. AP MODE

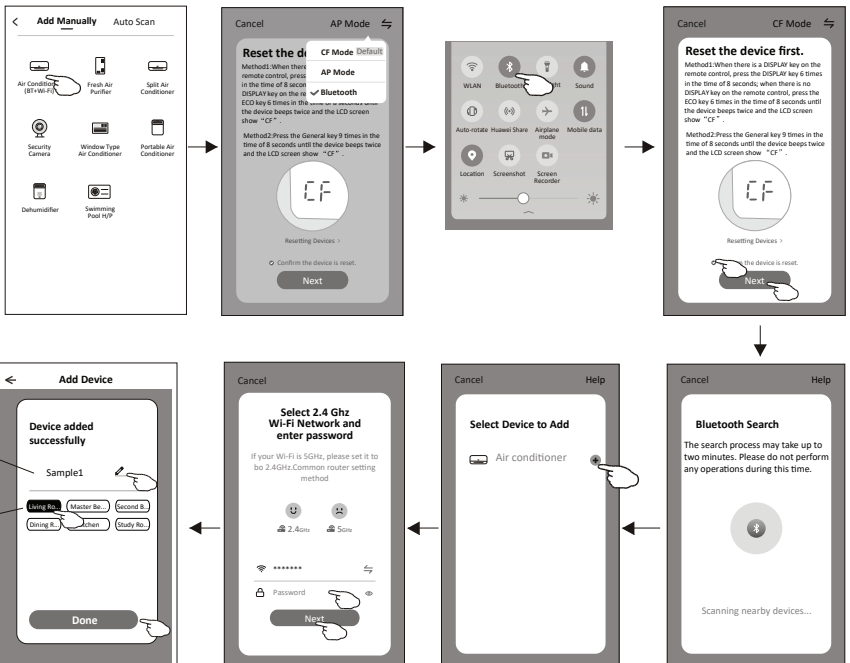
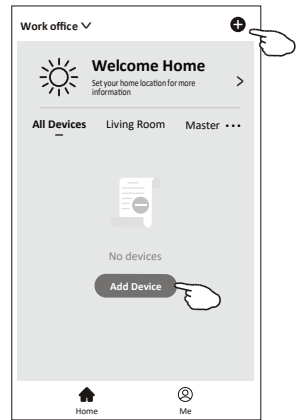
- i. Power on the indoor unit, no need to launch the air conditioner.
- ii. Click “+” in the upper right corner of the “Home” screen or tap “Add device” on the room which has no device.
- iii. Tap the “Air conditioner(BT+Wi-Fi)” logo.
- iv. Tap in the upper right corner and choose “AP Mode” then follow the comments on the screen to reset the Wi-Fi module then check “Confirm the device is reset” and tap “Next”.
- v. Input the password of the Wi-Fi which the same as your smartphone connected, then tap “Next”.
- vi. Read the instruction carefully and tap “Connect now”.
- vii. In the network setting screen, select “SmartLife-****”, and tap “-”.
- viii. You can see the percent rate of connecting process, at the same time “PP”, “SA”, “AP” shining in turn on the indoor display.
 - “PP” means “Searching the router”
 - “SA” means “connected to the router”
 - “AP” means “connected to the server”



ADD DEVICE CONT.

3. BLUETOOTH MODE

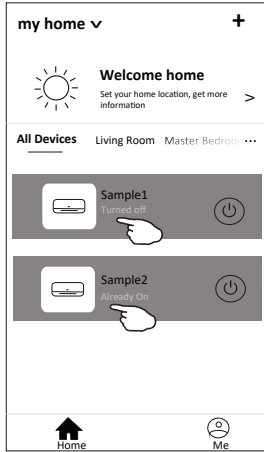
- i. Power on the indoor unit, no need to launch the air conditioner.
- ii. Click “+” in the upper right corner of the “Home” screen or tap “Add device” on the room which has no device.
- iii. Tap the “Air conditioner(BT+Wi-Fi)” logo.
- iv. Make sure Blue tooth of your smart phone is available.
- v. Tap in the upper right corner and choose “Bluetooth” then follow the comments on the screen to reset the Wi-Fi module then check “Confirm the blue tooth is reset” and tap”Next”.
- vi. Select one of the found device and tap “+”
- vii. Input the password of the Wi-Fi which the same as your smartphone connected, then tap “Next”.
- viii. You can see the percent rate of connecting process, at the same time “PP”, “SA”, “AP” shining in turn on the indoor display.
 - “PP” means “Searching the router”
 - “SA” means “connected to the router”
 - “AP” means “connected to the server”



AIR CONDITIONER CONTROL

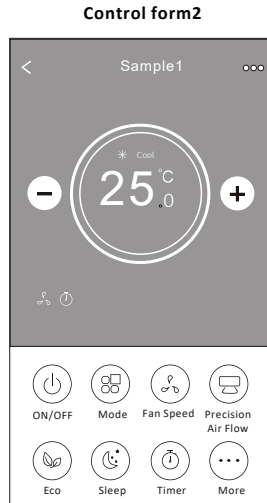
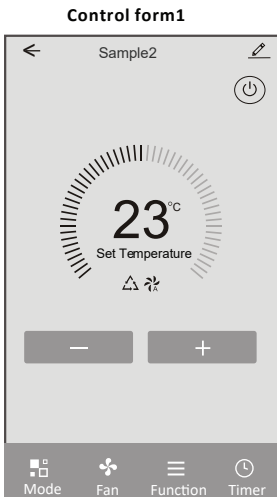
The device control screen will pop up automatically after adding the device.

The device control screen will pop up manually by tapping the device name on the home screen.



Note: There are two different control forms base on different software or Wi-Fi module firmware.

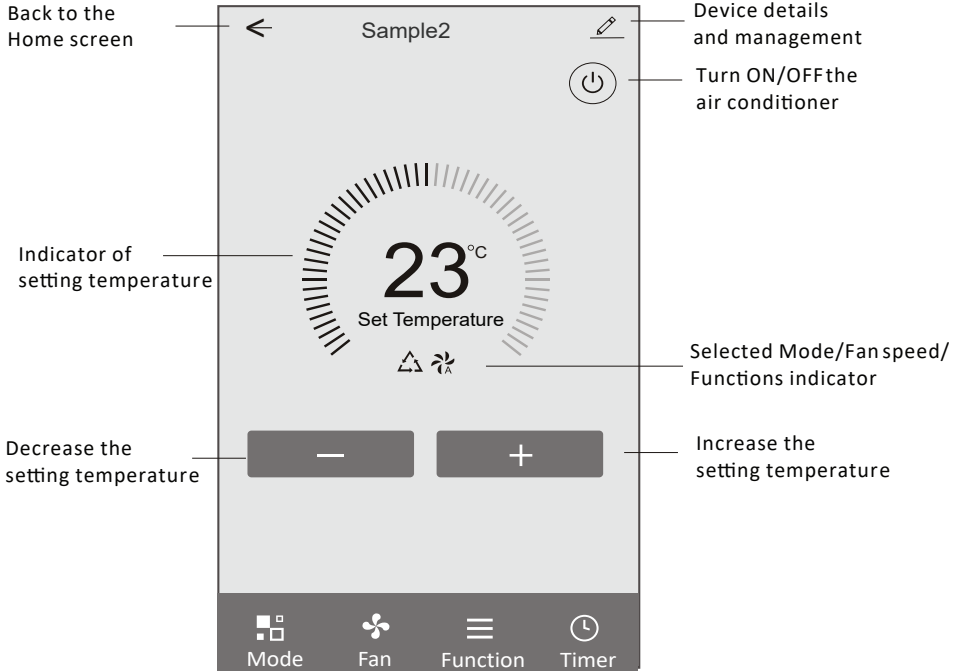
Please read the manual carefully based on the real control interface.



AIR CONDITIONER CONTROL CONT.

CONTROL FORM 1

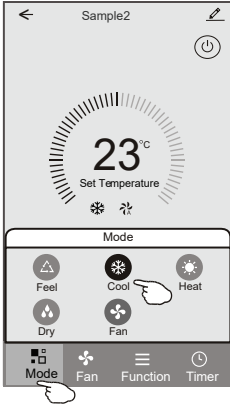
The main control interface



AIR CONDITIONER CONTROL CONT.

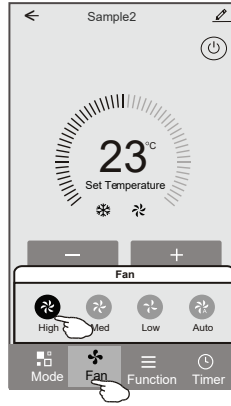
Mode Setting

1. Tap Mode to pop up the Mode screen.
2. Select one of the mode Feel/Cool/Heat/Dry/Fan.
3. Tap anywhere around the setting temperature to cancel the Mode setting.



Fan Speed Setting

1. Tap Fan to pop up the Fan screen.
2. Select one of the fan speed High/Medium/Low/Auto.
3. Tap anywhere around the setting temperature to cancel the selection.



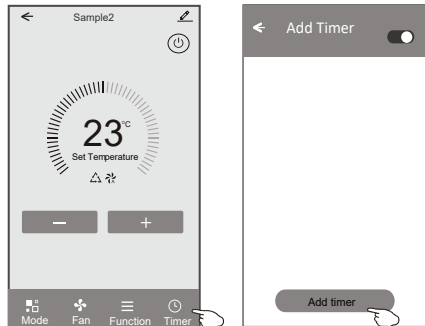
Function Setting

1. Tap Function to pop up the Function screen.
2. Select one of the functions Sleep/Turbo/ECO.
3. Select UP-DOWN/LEFT-RIGHT for auto swing with direction of UP-DOWN/LEFT-RIGHT.
4. Tap anywhere around the setting temperature to cancel the Function setting.



Timer Setting

1. Tap Timer to pop up the Add Timer screen.
2. Tap Add Timer.



AIR CONDITIONER CONTROL CONT.

3. Select the time, select the repeat days and Timer on/off.
4. Select the Mode/Fan speed/Function and select the setting temperature for Timer on.
5. Tap Save to add the timer.

Timer on

	Cancel	Add Timer	Save
	12	07	
	13	08	
	14	09	
Hour setting	15	10	
	16	11	
	17	12	
	18	13	
Timer Off			
Timer On			✓
Mode setting	Mode		Cool >
Fan Speed setting	Fan		Auto >
Temperature setting	Set Temperature		23°C >
	Function		>

Timer off

	Cancel	Add Timer	Save
	12	25	
	13	26	
	14	27	
Minute setting	15	28	
	16	29	
	17	30	
	18	31	
Select days to use Smart Mode			
Weekly setting	<input checked="" type="radio"/> Mon <input type="radio"/> Tues <input type="radio"/> Wed <input type="radio"/> Thur <input type="radio"/> Fri <input type="radio"/> Sat <input checked="" type="radio"/> Sun		
Timer ON/OFF setting	Timer Off		✓
	Timer On		

Timer Management

1. Tap the bar of timer to edit the Timer like the Timer adding process.
2. Click the switch to enable or disable the Timer.
3. Hold the bar of Timer for approximately 3 seconds and pop up the Remove Timer screen, tap CONFIRM and remove the Timer.

Remove Timer

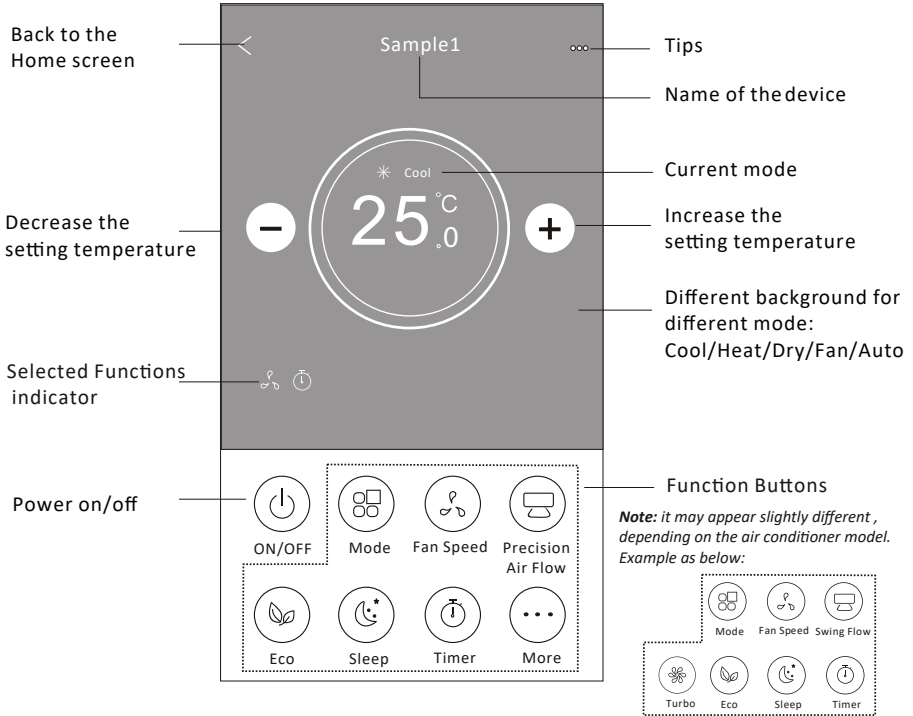
Remove the timer?

CANCEL CONFIRM

AIR CONDITIONER CONTROL CONT.

CONTROL FORM 2

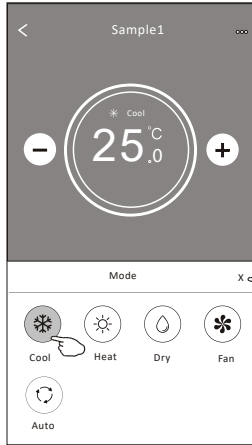
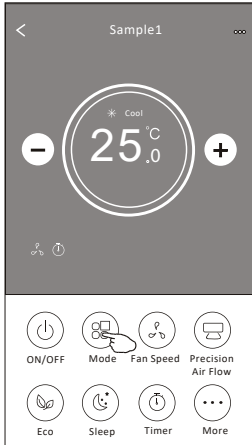
The main control interface



AIR CONDITIONER CONTROL CONT.

Mode Setting

1. Tap the Mode button.
2. There are 5 modes on the Mode screen, tap one button to set the Air conditioner working mode.
3. Tap the X button to back the main control screen.
4. The mode and background will change on the screen.

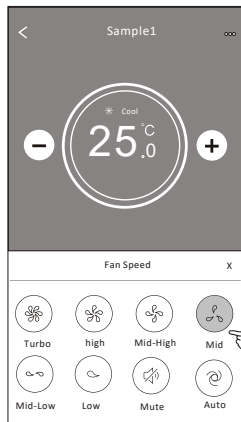
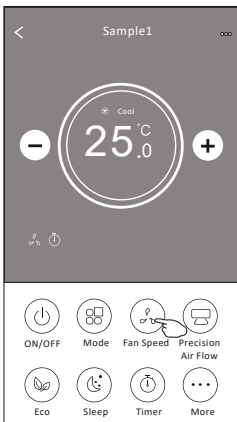


Note: Please read the details of each mode in the user manual to control accordingly.

Fan Speed Setting

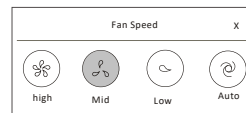
1. Tap the Fan speed button.
2. Choose your desired fan speed and tap it.
3. Tap the X button to back the main control screen.
4. The selected fan speed indicator will appear on the screen.

Mode	Fan Speed
Cool	All speeds
Fan	All speeds
Dry	
Heat	All speeds
Auto	All speeds



Note: Fan Speed cannot be adjusted on Dry mode.

Note: Fan Speed screen may appear slightly different, depending on the air conditioner model.
Example as below:

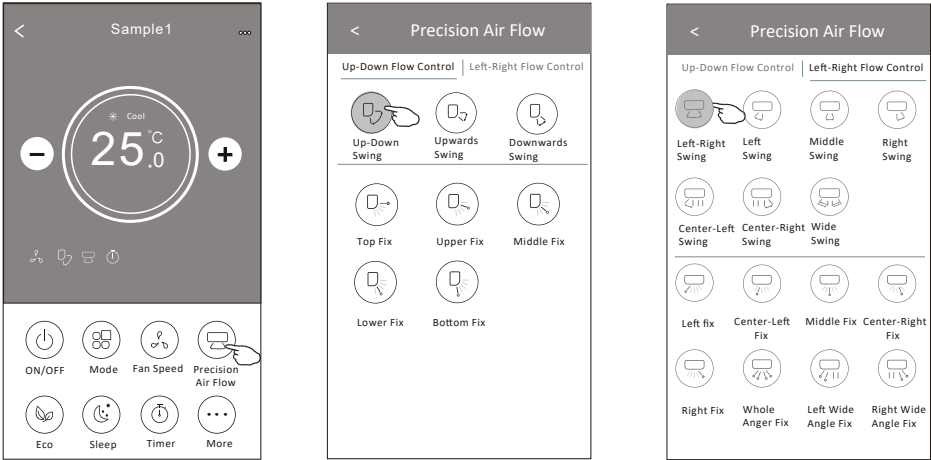


AIR CONDITIONER CONTROL CONT.

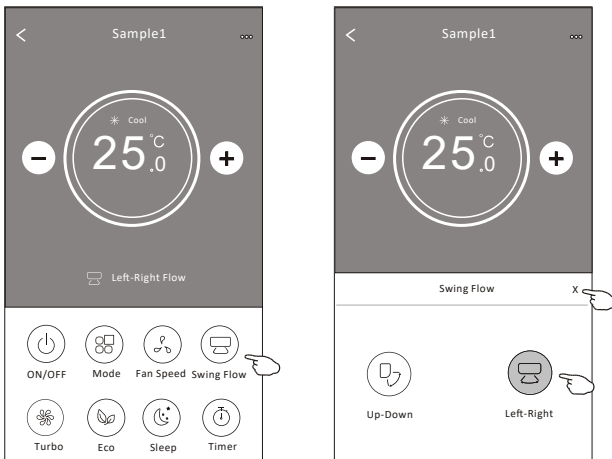
Air Flow Control

1. Tap the Precision Air Flow button or Swing Flow button.
2. Choose your desired air flow and tap it.
3. Tap the X button to back to the main control screen.
4. The selected air flow indicator will appear on the screen.

Note: For some models without auto Left-Right wind, If you activate it, you will hear a beep, but no actions.



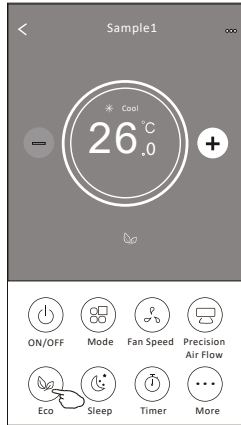
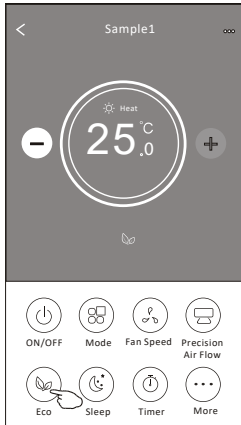
Note: The Main control screen and Air Flow screen may appear slightly different, depending on the air conditioner model. Example as below:



AIR CONDITIONER CONTROL CONT.

ECO Function

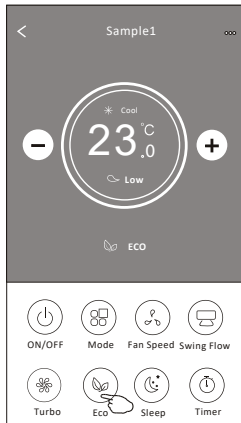
1. For Eco function, just tap the button to activate the function, the button will be lighting and the indicator will appear on the screen.
2. Tap again to disable the function.
3. Temperature controlled for some air conditioner model:
 In Cooling mode, the new setting temperature will be $\geq 26^{\circ}\text{C}$.
 In heating mode, the new setting temperature will be $\leq 25^{\circ}\text{C}$.



Mode	ECO Enabled
Cool	Yes
Fan	
Dry	
Heat	Yes
Auto	

ECO is disabled on Fan/ Dry/Auto mode .

Note: The Main control screen and ECO control method may appear slightly different, depending on the air conditioner model. Example as below:

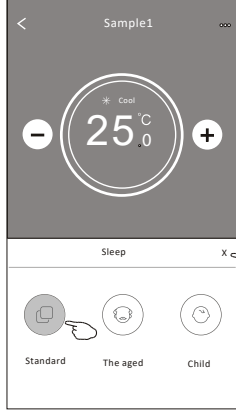
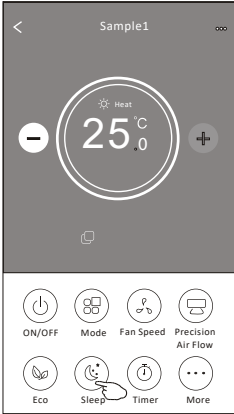


Note:
 ECO is disabled on Turbo/Sleep mode too for some air conditioner model.

AIR CONDITIONER CONTROL CONT.

Sleep Function

1. Tap the Sleep button.
2. Choose your desired sleep mode and tap it.
3. Tap the X button to back to the main control screen.
4. The selected sleep mode indicator will appear on the screen.

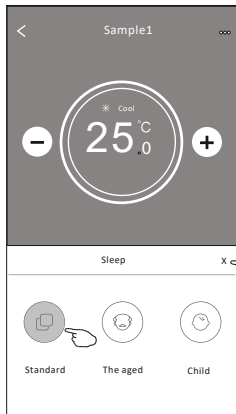
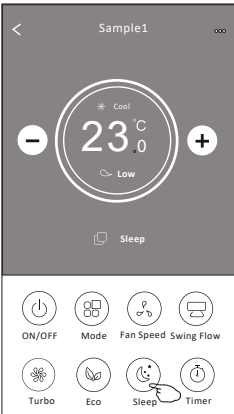


Mode	Sleep Enabled
Cool	Yes
Fan	
Dry	
Heat	Yes
Auto	

Sleep is disabled on Fan/Dry/Auto mode.

Note:

The Main control screen may appear slightly different, depending on the air conditioner model. Example as below:



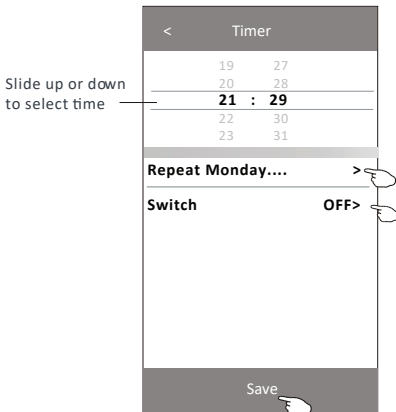
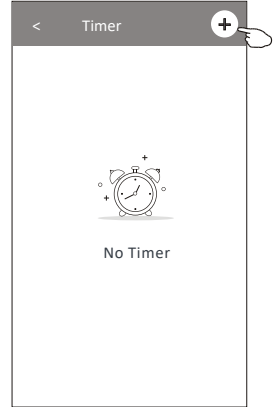
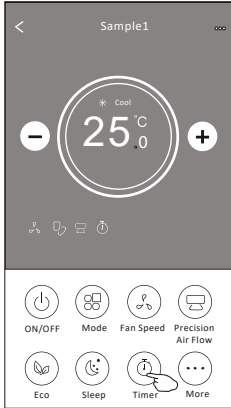
Note:

Sleep is disabled on Turbo/Sleep mode too for some air conditioner model.

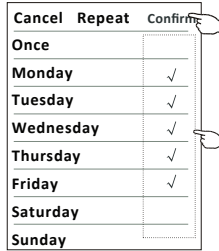
AIR CONDITIONER CONTROL CONT.

Timer ON Setting

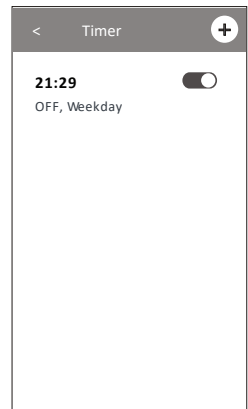
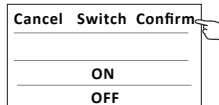
1. Tap the Timer button.
2. Tap + in the upper right corner of the Timer main screen.
3. Choose the Time/Repeat/Switch OFF then tap Save.
4. The timer(off) will appear on the Timer main screen.



Tap repeat> then tap your desired repeat days or Once, then tap Confirm your selection.



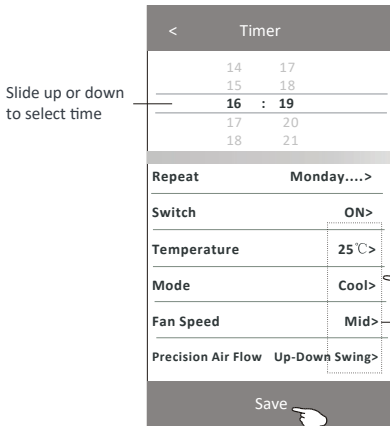
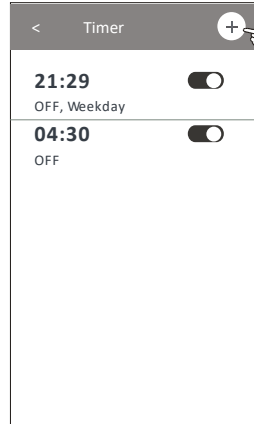
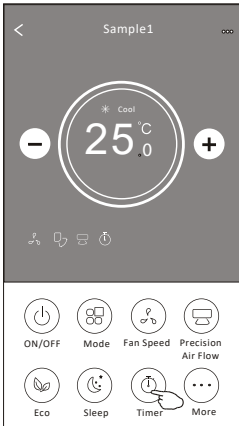
Tap Switch> then slide the screen to choose ON and Confirm.



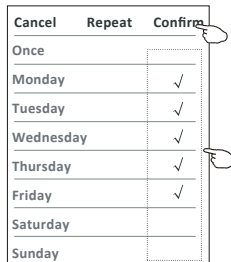
AIR CONDITIONER CONTROL CONT.

Timer OFF Setting

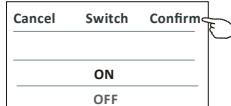
1. Tap the Timer button.
2. Tap + in the upper right corner of the Timer main screen.
3. Set the Time/Repeat Date/Switch(ON)/Temperature/Mode/Fan speed/Air Flow as your desired and then tap Save.
4. The timer will appear on the Timer main screen.



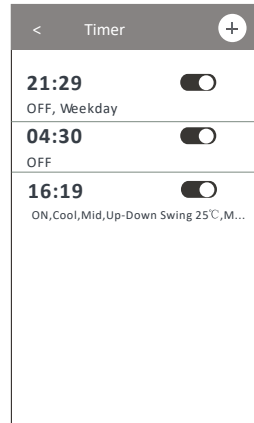
Tap repeat > then tap your desired repeat days or Once, then tap Confirm your selection.



Tap Switch > then slide the screen to choose ON and Confirm.



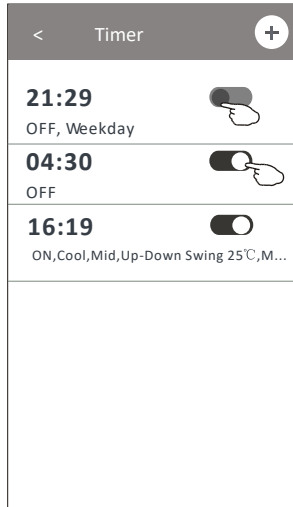
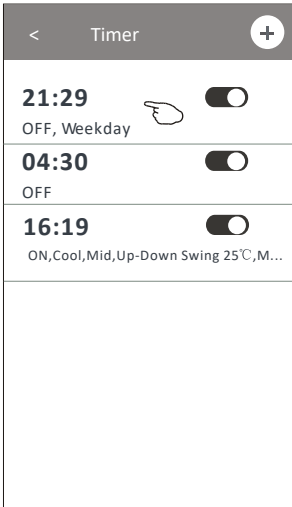
Tap Temperature/Mode/Fan Speed/Air Flow > one by one then set as your desired as mentioned on the previous chapter and tap Confirm the setting.



AIR CONDITIONER CONTROL CONT.

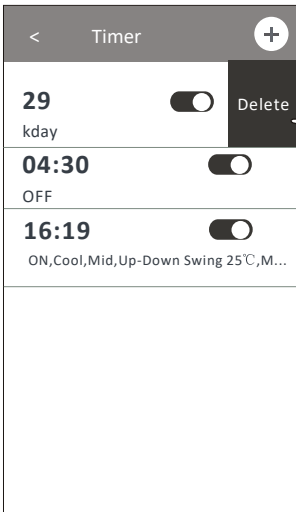
Timer Management

1. Change the Timer setting:
Tap anywhere of the timer list bar except the switch bar to get into the Timer setting screen, change the setting and then tap save.
2. Enable or Disable the Timer:
Tap the left of the switch to disable the Timer.
Tap the right of the switch to enable the Timer.
3. Delete the Timer:
Slide the list bar of the Timer from right to left until Delete button appear, then tap delete.



Slid left to disable the Timer.

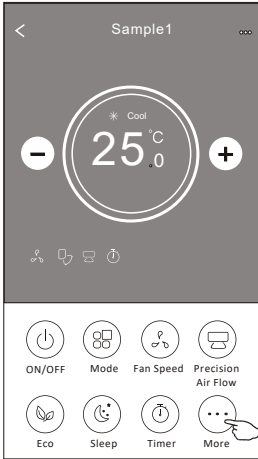
Slid right to enable the Timer.



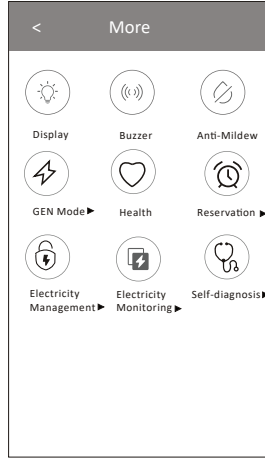
AIR CONDITIONER CONTROL CONT.

More Functions




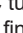

1. Tap the More button to operate additional functions if it appears on the screen.



Note:
Some air conditioner models do not have the more button.



Note: The appearance maybe different , some icons will be hidden if the air conditional do no have this function or do not enable on the current mode.

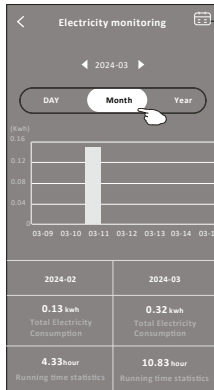
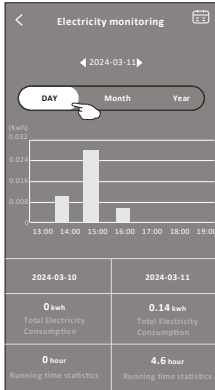
2. Tap the “” to switch on/off the indoor LED display.
3. Tap the “” to switch on/off the buzzing when operating through Wi-Fi APP.
4. Tap the “” button to activate the Anti-Mildew function, if it is available on the screen. After AC turning off , it will start drying , reduce residual moisture and prevent mould, after function finish, it will automatically turn off.
5. Tap the “” button to switch on/off the healthy function, if it is available on the screen. It activate the antibacterial ioniser function.This function only for models with the ioniser generator.
6. Tap the “” button, if it is available on the screen. In this Mode, you can choose one of the three levels of current. The air conditioner will maintain proper current to save energy.

AIR CONDITIONER CONTROL CONT.

- Tap the “Electricity Monitoring” button if it is available on the screen.
In this function, you can monitor the air conditioner electricity consumption.



Electricity Monitoring ▶



You can tap this button to pop up the calendar then select the date.

- Tap the “🕒” button, if it is available on the screen.
Check the details of the Self-Cleaning function on User Manual.
- Tap the “🌡️” button, if it is available on the screen.
This function helps keep the room temperature over 8°C.
Check the details of the 8°C Heat function on User Manual.
- Tap the “Reservation” button, if it is available on the screen.
You can set the time, repeat day, temperature, mode, fan speed, air flow as you desired and then tap Save to activate the function.
The air conditioner will automatically reach your settings at the appointment time.



Reservation ▶

14	17
15	18
16	19
17	20
18	21

Repeat setting **Monday... >**

Temperature **25°C >**

Mode **Cool >**

Fan Speed **Mid >**

Precision Air Flow **Up-Down Swing >**

Save

16:19:00

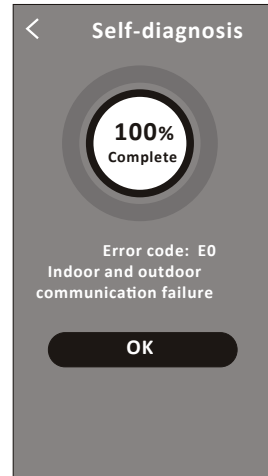
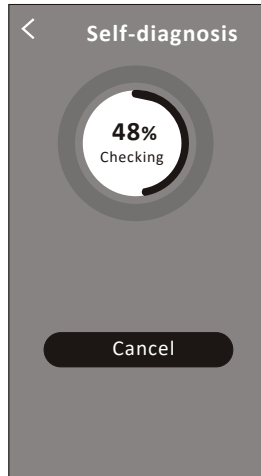
ON, Cool, Mid, Up-Down Swing 25°C, M...


After the reservation is set up, the air conditioner will automatically reach your set requirement at your appointment time.

AIR CONDITIONER CONTROL CONT.


11. Tap the “Self-diagnosis” button, if it is available on the screen.

The air conditioner will automatically diagnosis itself and indicate the Error code and the problem instructions if possible.



12. Tap the “” button if it is available on the screen.

This function allow the air conditioner to turn on/off the display automatically according to the light intensity.

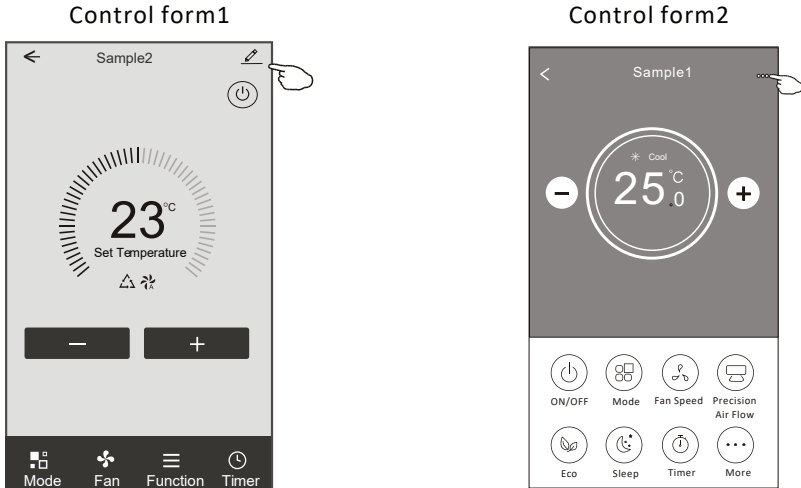
13. Tap the “” button if it is available on the screen.

In this function, the air conditioner will blow soft airflow through the micro holes on the deflector.

AIR CONDITIONER CONTROL CONT.

Device details and management

Tap “✎” on control form1 or tap ... on control form 2 , get into the device details screen. Here you can get some useful information and sharing the device to other accounts. Check the following pictures and instructions carefully.

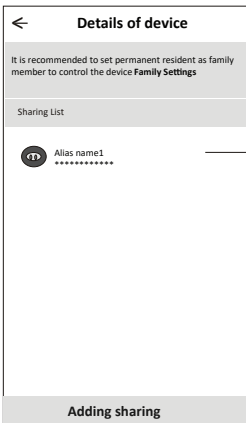
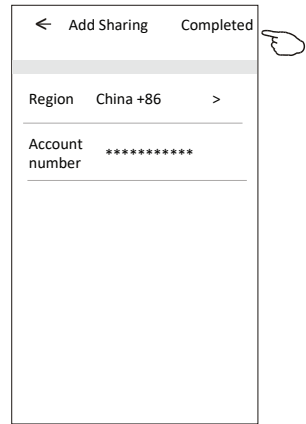
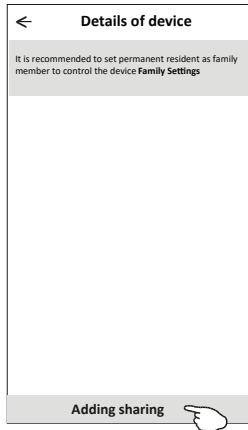
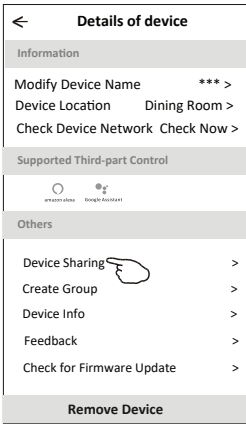


	<div style="border: 1px solid black; padding: 5px;"> <p>Details of device</p> <p>Information</p> <p>Modify Device Name ***></p> <p>Device Location Dining Room ></p> <p>Check Device Network Check Now ></p> <p>Supported Third-part Control</p> <p>Others</p> <p>Device Sharing ></p> <p>Device Info ></p> <p>Feedback ></p> <p>Check for Firmware Update ></p> <p>Remove Device</p> </div>	
Tap to change the device location to another room		Tap to check the network status
		Tap to check the network status
		Tap to got the instruction for connecting the Amazon Alexa or Google Assistant voice controller
		Tap to sharing the device to other account
		Tap to check the Virtual ID/Wi-Fi name/IP address MAC address/Time Zone/Wi-Fi single strength
Feed back the problems or some suggestions to the APP administrator.		Check and update the firmware
		Tap to remove the device and the device will be reset automatically once be deleted.

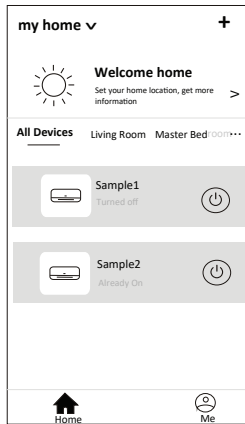
AIR CONDITIONER CONTROL CONT.

SHARING DEVICES TO OTHER ACCOUNTS

1. Tap “Device Sharing” and pop up Device Sharing screen.
2. Tap “Add Sharing”.
3. Select the region and enter the account which you want to sharing.
4. Tap “Completed”, the account will appear on your sharing list.
5. The received sharing members should hold pressing the home screen and slide down to refresh the device list, the device will appear on the device list.



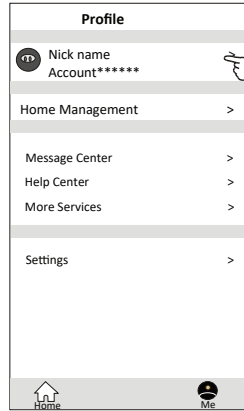
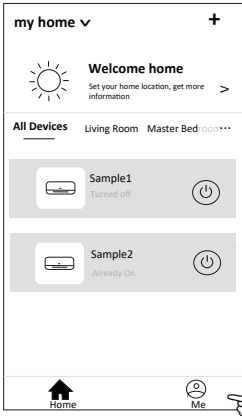
Hold the bar about 3s then you can delete the sharing account.



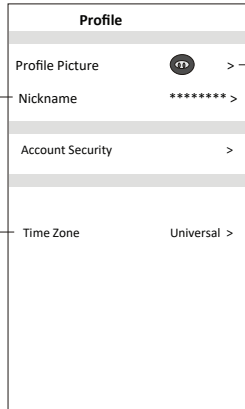
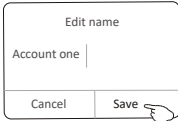
Hold on and slide down to refresh the device list

ACCOUNT MANAGEMENT

ACCOUNT PROFILE SETTING

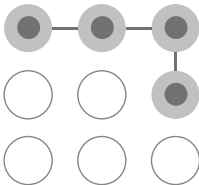


Change the nick name of your account

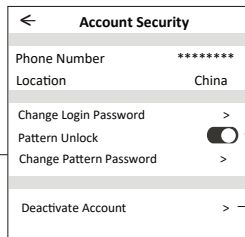


Select a picture for the account from local album

Select the time zone



Set a pattern password for launching the APP



Change the password like reset password on page7

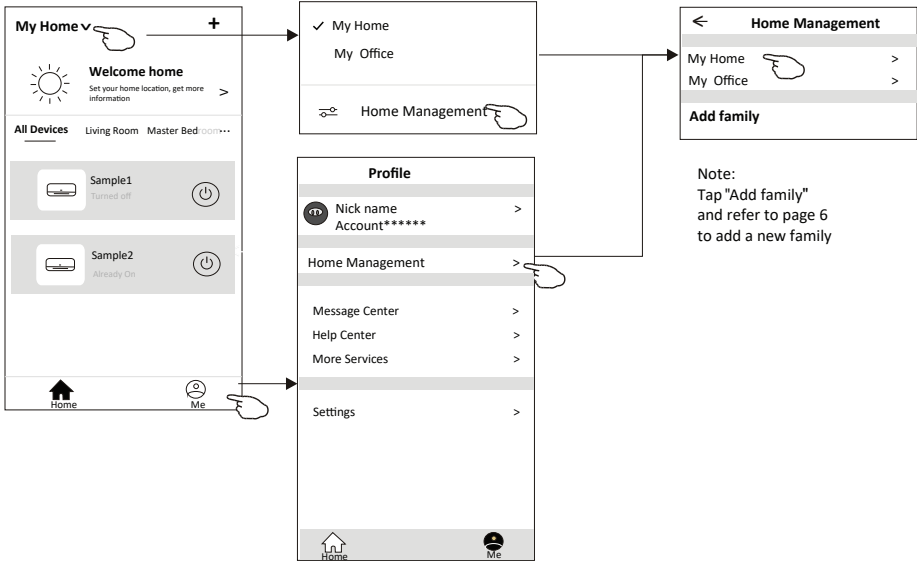
Tap the switch to enable or disable the Pattern password

Please carefully to deactivate the account for all data will be deleted.

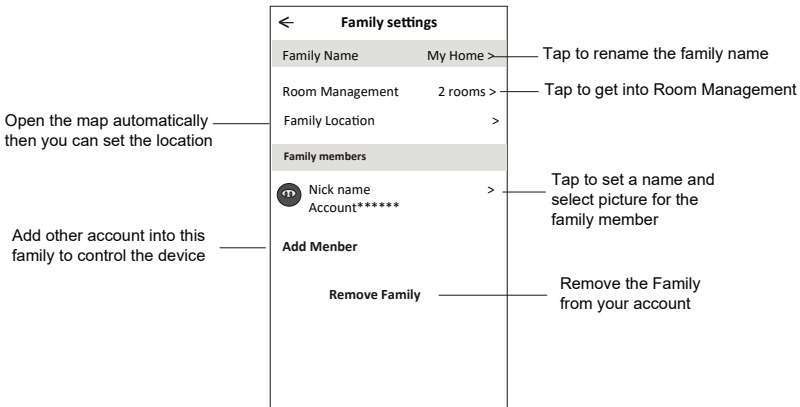
ACCOUNT MANAGEMENT CONT.

HOME(FAMILY) MANAGEMENT

1. Tap the name of home at the left upper corner of the Home Screen and select the Home Management. Or tap Me and tap Home Management.
2. Tap one of the families in the family list and get into Family Settings screen.



3. Set the family as the following indicators.



TROUBLESHOOTING

DESCRIPTION	ANALYSIS OF CAUSE
<p>Air conditioner can't be configured successfully</p>	<p>1. Check the mobile connected WLAN router SSID and password is correct; 2. Check whether there are additional settings of WLAN router as shown below.</p> <ol style="list-style-type: none"> 1) Firewall by router itself or by PC 2) MAC address filtering 3) Hidden SSID 4) DHCP server <p>Reboot WLAN router, mobile device and air conditioner (WLAN module) and connect air conditioner by CF mode again. Before rebooting, check nobody has already connected to same air conditioner.</p>
<p>Mobile can't control air conditioner</p>	<p>1. When air conditioner (WLAN module) is rebooted and app displays Device remove, ignoring this confirmation will lead to mobile device losing control permission of the air conditioner. You will need to connect the air conditioner by CF mode again. 2. In case of power failure, mobile device will lose control permission of air conditioner for 3 minutes after power failure. (Notification will now show up on the mobile device.) If you cannot control the app (air conditioner) even after power restored, you will need to connect the air conditioner by CF mode again.</p>
<p>Mobile can't find air conditioner</p>	<p>1. Smart Life App display Air conditioner Device offline. Please check the following conditions.</p> <ol style="list-style-type: none"> 1) The air conditioner has been reconfigured. 2) Air conditioner out of power. 3) Router out of power. 4) Air conditioner can't connect to router. 5) Air conditioner can't connect to network through the router. 6) Mobile device can't connect to network. <p>2. After adding the device, it disappears in device list . Hold and slide down to refresh the device list. If it has no change, shut down the app and start again.</p>

NOTES

Warranty Registration (Australia Only)
To register your warranty, go to
www.seeleyinternational.com



Warranty Service
Australia: 1300 650 644
seeleyinternational.com

It is the policy of Seeley International to introduce continual product improvement.
Accordingly, specifications are subject to change without notice.
Please consult with your dealer to confirm the specifications of the model selected.