

The new TBQI series optimises superior cooling performance with unmatched product quality, design and value **offering the highest energy efficiency in evaporative cooling[^]**



Introducing the advanced
MAGI@TOUCH
Next generation smart controller

THE BREEZAIR TBQI SERIES: NEXT GENERATION UNRIVALLED COOLING CAPACITY

At Seeley International, we have invested more than 40+ years designing and developing superior cooling systems. Known as a trusted leader in the industry, Seeley International is committed to product innovation. Our state-of-the-art NATA Accredited Meridian Test Laboratory allows us to conduct extensive in-house performance testing.

NEW: 2021 TBQI PRODUCT SERIES!

TBQI is the ideal unit for residential and commercial applications and offers premium advanced technology and a revolutionary design for the entire home or building. With the Breezair TBQI, you will experience outstanding comfort and remarkable energy efficiency.

- Air volume [L/s] meets industry standard rating.
- Best cabinet warranty in the world; no other manufacturer compares to our 25-year guarantee.
- Trusted by building owners and contractor friendly to install.

BREAKTHROUGH BLACK OPAL™ MINI-CELL^ CHILLCEL® PAD TECHNOLOGY

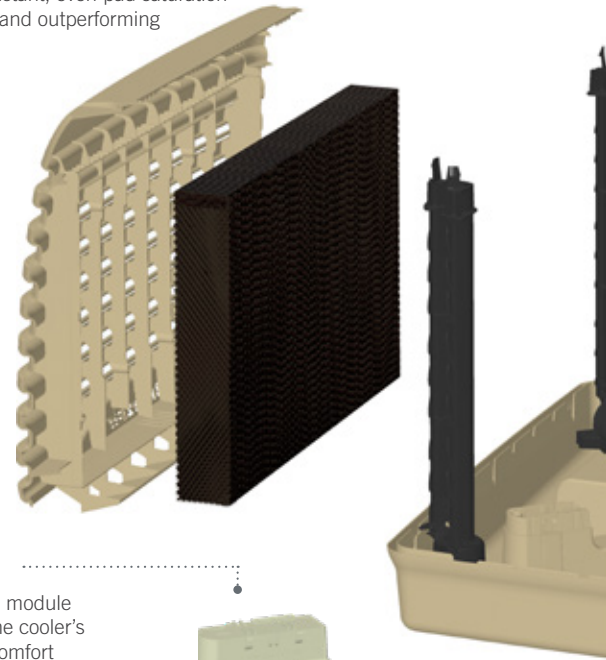
- The only evaporative cooling medium of its kind. Fully manufactured in Australia to address the harsh global climate. It's an **absolute out-performer!**
- Exclusive small cell design provides cutting-edge cooling capacity.
- Maintains our global leading Mini-Cell^ Chillcel® pad technology, which increases surface area of the pads by 25%, dramatically multiplying cooling capacity and efficiency - **BEYOND BELIEF!**
- **BLACK OPAL™ MINI-CELL^ CHILLCEL® pads** deliver transformational aesthetics to your home enabling the unit to blend seamlessly into its surroundings.

HIGHLY DURABLE AND NON-CORROSIVE CABINET AND WATER RESERVOIR

High performance Permatuf® polymer construction will not corrode or rust.

EXCEPTIONAL WATER DISTRIBUTION INCREASES COOLING EFFECT

This Australian designed, world patented, free flow, water distributor ensures constant, even pad saturation increasing the cooling effect and outperforming competitor products.



DIGITAL SMARTBOX™

The Smartbox™ digital control module monitors and controls all of the cooler's features to provide ultimate comfort conditions, temperature sensing and water quality supervision – completely, safely and reliably.



TORNADO® PUMP

- Exceptional reliability in extreme conditions
- Dual directional impact start motor/impeller
- Encapsulated motor with overload cut-out, stainless steel shafts and bearings are fully protected from water



CHOICE OF CONTROLLER

MAGIQTOUCH®

Smart, sophisticated and incredibly intuitive, your MagIQtouch® controller makes operating your Breezair, a breeze. Control the temperature, fan speed and many more features on a user friendly touch screen. Discreet and modern design will blend seamlessly into the décor of your home.

MAGIQTOUCH® wired controller

Touch screen, wall mounted controller wired to your home or building

MAGIQTOUCH® wi-fi enabled (Optional add-on)

- Upgrade to a WI-FI module to work with your wired-in MagIQtouch® Controller*, enabling you to control your cooling directly from your personal device through our smart app.
- The Smart app is available on Android and iOS devices.
- Integrate into voice activated smart home controls like Google Home and Amazon Alexa.

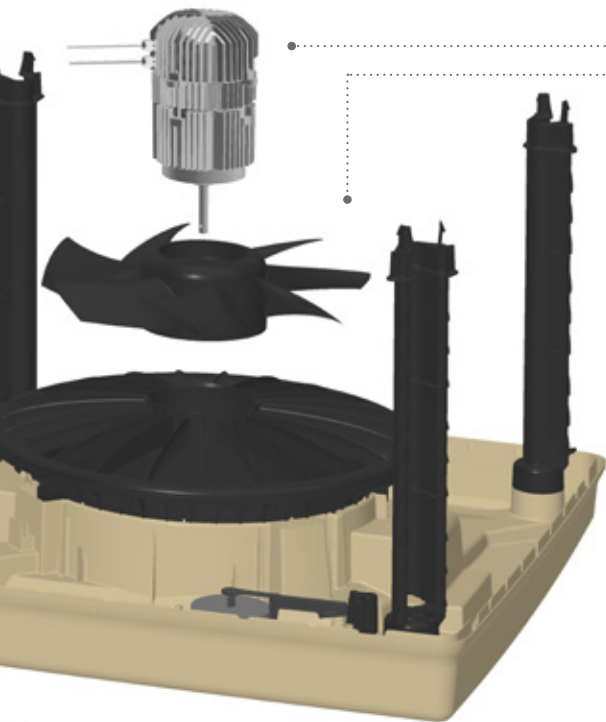
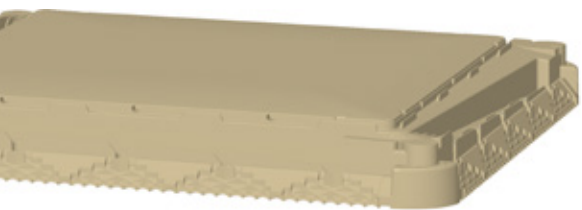




BREEZAIR GUARANTEE

For complete peace of mind, Breezair backs every one of its air conditioning systems with an industry leading comprehensive guarantee program.

Pump, motor and electronics come with a an additional 1 year guarantee for residential installations (3 years total). Please refer to your owner's manual for all service and guarantee terms and conditions.



INVERTAIR™ INVERTER MOTOR

- Ensures long term performance and incredible reliability of your system
- Variable speed motor offers maximum control over comfort level
- Energy efficient - consumes less energy than conventional motors

SUPERSTEALTH® FAN

SuperStealth® axial fan is specifically designed for aerodynamic, efficient and reliable air delivery

WATERMANAGER™ SAVES WATER

- Uses the minimum amount of water to achieve high efficiency cooling
- Water quality monitoring to maximise water savings

AUTO WATER DRAINING KEEPS YOUR SYSTEM CLEAN

- Empties the reservoir automatically when system is not in use, leaving it clean and dry
- Ensures the system is operating at maximum efficiency, while using the minimum amount of water
- Helps to avoid the seasonal maintenance* as required by some other similar products

*Seasonal maintenance does not replace regular maintenance of the unit as required for peak performance.

MAGIQCOOL™ CONTROLLER



Operate one cooler from an easy to use, wall mounted thermostat controller. The controller comes with 20m wiring loom, that can be extended up to a maximum length of 100 m.



AUTO WEATHERSEAL

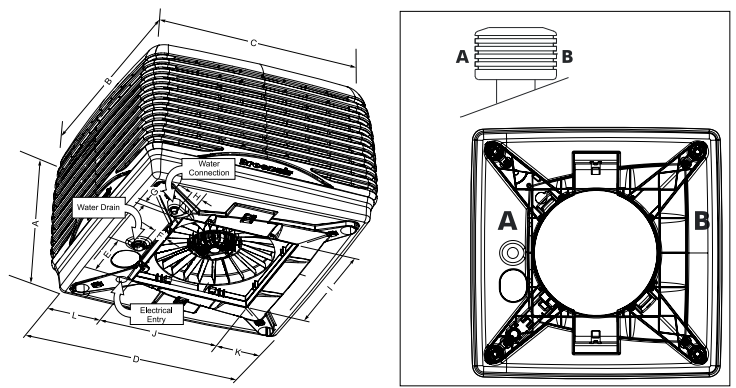
The AUTOWeatherseal closes the cooler air discharge outlet automatically, thus significantly reducing natural air currents from circulating in and out of the building. The result – a more comfortable and controlled environment.

Requires a 550mm x 550mm square raw edge connecting duct. Refer to technical specifications for more information. Be sure to talk to your installer about optional extras.

Technical Information

Specification		TBQI550
Airflow @ 80Pa	(m ³ /h)	11,050
Cooling capacity*	(kW)	14.3
Power consumption (total)	Watts (max / min)	1,490
	Current max (amp)	7.0
Power supply	Voltage / Phases / Hz	220-240 / 1 / 50
Controller	Type	Digital
Fan	Type	Axial
	Diameter - External (mm)	534
Motor	Type	Inverter
	Speed max (rpm)	1,700 VAR
	Output Watts max	950
	Overload & Fuse	One Shot Fuse
	Enclosure	IP24
Pump	Type	Centrifugal
	Motor	Synchronous
	Rating Watts (input)	0.25
	Flow rate (L/min)	21
	Voltage / Phases / Hz	230 / 1 / 50
Cooling pad ChillCel	Size (mm)	850 x 526 (H) x 90 (4 pads)
	Pad area (m ²)	1.79
	Tank capacity (L)	23
Water	Inlet (mm / inches)	12.7 / ½" male BSP
	Drain (mm / inches)	40 / 1½" male BSP
	Dimensions including pallet (mm)	1150 x 1150 x 902 (H)
Shipping	Volume (m ³)	1.20
	Mass (kg)	68
	Operating (kg)	91
	Connecting Duct (raw edged)	Length x Width (mm)
Cabinet	Available Colours	Beige and Grey

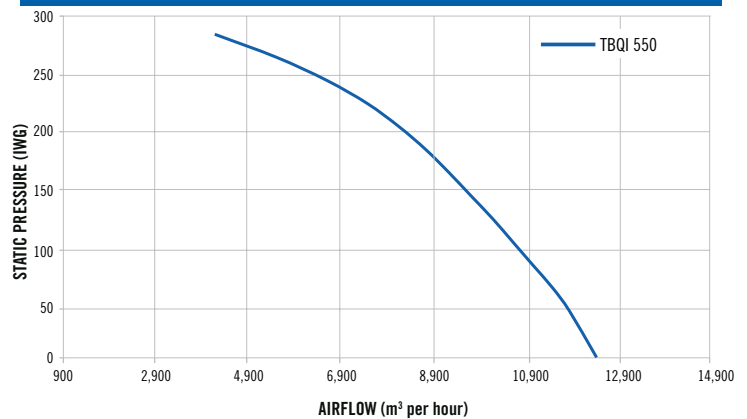
*Cooling capacity measured to Australian Standard AS2913-2000, ambient of 38°C dry bulb & 21°C wet bulb, with room exit temperature of 27.4°C.



CABINET DETAILS											
Model#	A	B	C	D	E	F	G	H	I	J	K
TBQI 550	835	1,150	1,150	1,080	275	95	82	82	555	555	249

Note: All dimensions are in inches.

FAN CURVE (CFM)



Model#	Airflow m ³ /hr @ 80Pa	Motor W	Certified Air Delivery (CFM) VS. Inch Water Gauge (IWG)							
			0	40	80	120	160	200	240	280
TBQI 550	11,050	950	12420	11840	11050	10190	9250	8170	6620	4210

Cooler Discharge Air Temperature Chart

		Ambient Relative Humidity %								
		10	20	30	40	50	60	70	80	90
Ambient Dry Bulb Temperature °C	10	2.8	3.7	4.6	5.4	6.3	7.0	7.8	8.6	9.3
	15	6.3	7.4	8.5	9.5	10.5	11.5	12.4	13.3	14.2
	20	9.6	11.0	12.3	13.6	14.8	15.9	17.0	18.1	19.1
	25	12.8	14.5	16.1	17.6	19.0	20.4	21.6	22.8	23.9
	30	16.0	18.0	19.9	21.7	23.3	24.8	26.2	27.6	28.8
	35	19.0	21.5	23.7	25.7	27.6	29.3	30.9	32.3	33.7
	40	22.1	25.0	27.5	29.8	31.9	33.8	35.5	37.1	38.6
	45	25.1	28.5	31.4	34.0	36.2	38.3	40.2	41.9	43.5
50	28.1	32.0	35.3	38.1	40.6	42.8	44.9	46.7	48.4	

This chart represents approximate air temperatures based on cooling performance at sea level. From tests carried out to Australian Standard 2913.



www.seeleyinternational.com



Seeley International Africa

Ph: +27 (0) 11 452 0394

Email: southafrica@seeleyinternational.com



Information in this brochure was correct at the time of preparation. E & OE

FS 744827